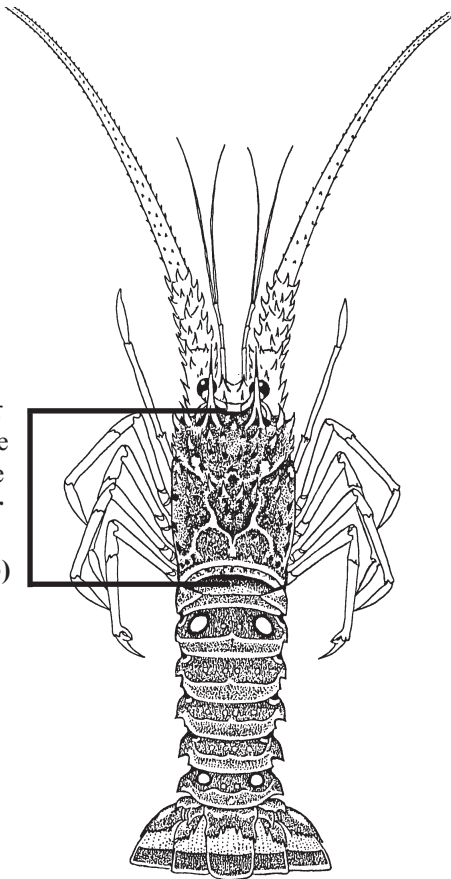


Measuring Lobster

- ✓ No person shall harvest or attempt to harvest spiny lobster by diving unless they possess, while in the water, a gauge made for measuring lobster.
- ✓ All lobster must be measured in the water, if harvested by diving.
- ✓ Lobster carapace must be **greater than three (3) inches** to be harvested or possessed. All undersized lobsters must be released unharmed.
- ✓ All recreationally harvested lobster must remain in whole condition while at sea.
- ✓ Tails can only be separated on land. When the tail is separated from the body, it must be greater than 5-1/2 inches.

Lobster carapace must be **greater than three (3) inches**.



Facts for All Seasons:

Possession: Lobster must be of legal size before they are in possession. NOTE: You may not have lobster in your possession in Everglades National Park (Florida Bay).

Bag Limits: The Federal bag limit cannot be combined with the State bag limit.

Egg-bearing (berried) lobster regardless of species must be released unharmed. Stripping egg-bearing females of eggs, and possession of spiny or ridged slipper lobster tails from which eggs have been removed is prohibited. Eggs are an orange, yellow, brown, or red mass found covering the underside of the lobster's tail.

Coral is protected from damage and removal in State and Federal waters. Do NOT touch, hold on to, stand on, break or otherwise harm coral. It is a fragile living animal.

Gear: Harvesting or attempting to harvest spiny lobster using any device that will or could puncture, penetrate, or crush the exoskeleton (shell) or the flesh of the lobster, and the use of such devices is prohibited.

"Bully-netting" is using a circular frame attached at a right angle to the end of a pole and supporting a conical bag of webbing. Possession of bully nets is prohibited in Everglades National Park (Florida Bay).

"Hoop-netting" is using a frame, circular or otherwise, supporting a shallow bag of webbing and suspended by a line and bridles. Possession of hoop nets is prohibited in Everglades National Park (Florida Bay).

"Artificial Habitats in State Waters" is any material placed in the waters of the state that is reasonably suited to providing cover and habitat for spiny lobster. Placing artificial habitat or harvesting lobster from artificial habitat is prohibited. Such material may be constructed of, but is not limited to, wood, metal, fiberglass, concrete, or plastic, or any combination thereof, and may be fabricated for this specific purpose or for some other purpose. Artificial habitat does not include fishing gear allowed by FWC or artificial reefs permitted by Florida DEP or Army Corps.

License Requirements: Recreational harvesters are required to possess a valid Florida Saltwater Fishing License with a current spiny lobster permit. Consult your license agent for exemptions.

Spanish and slipper lobster are closed year round to harvest in Key Largo and Looe Key Existing Management Areas, Everglades and Dry Tortugas National Parks, Florida Keys National Marine Sanctuary Ecological Reserves, Sanctuary Preservation Areas and Special-use Research Only Areas. During the Regular Season, they are closed to harvest in John Pennekamp Coral Reef State Park Lobster Exclusion Zones and from or within coral formations (patch reefs) within the Park.

Commercial Lobster Traps: It is a felony to molest, damage, or take lobster from traps in State or Federal waters.

Dive Flag: All divers and snorkelers in the water are required to prominently display a diver down flag. Vessel operators must slow to idle speed within 100 yards of a dive flag.

This is not an official publication of lobster season rules and regulations.

Florida Fish and Wildlife Conservation Commission

For questions on regulations or to report a violation
 Division of Law Enforcement 888-404-3922
 Marathon Office 305-289-2320
 Division of Marine Fisheries 850-487-0554

South Atlantic Fishery Management Council 866-723-6210

Gulf of Mexico Fishery Management Council 888-833-1844

John Pennekamp Coral Reef State Park 305-451-1202

National Parks- Everglades, Dry Tortugas and Biscayne
 Information 305-242-7700
 24-hour Dispatch (Everglades, Biscayne) 305-242-7740

Florida Keys National Wildlife Refuges 305-872-2239

NOAA Florida Keys National Marine Sanctuary
 Key Largo Office 305-852-7717
 Key West Office 305-809-4700

For questions on shoreline regulations or to report a shoreline violation, contact the appropriate entity:

Islamorada 305-664-6480

Key Colony Beach 305-289-1212

Key West 305-809-3700

Layton 305-664-4667

Marathon 305-743-0033

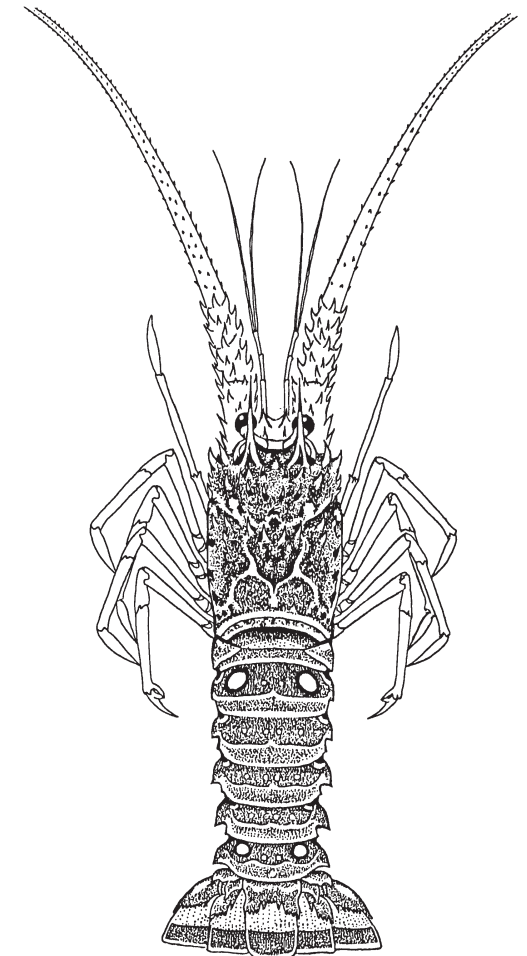
Monroe County 305-289-2805

Visit these websites!

www.myfwc.com
 www.nmfs.noaa.gov
 www.floridastateparks.org/pennekamp/
 www.nps.gov/ever
 www.nps.gov/bisc
 www.nps.gov/drto
 www.floridakeys.noaa.gov
 www.dep.state.fl.us
 www.islamorada.fl.us
 www.keycolonybeach.net
 www.cityofkeywest-fl.gov/
 www.cityoflayton.com
 www.ci.marathon.fl.us
 www.monroecounty-fl.gov



Regulations for Recreational Harvest and Lobster Information for Monroe County, Florida



Florida Spiny Lobster (Crawfish)
Panulirus argus

Sport Season State and Federal Waters

The two-day Sport Lobster Season is always the last **consecutive** Wednesday and Thursday in July.

Begins at 12:01 a.m. on the first day of the sport season.
Ends at 12:00 midnight on the last day of the sport season.

Bag Limit: Six (6) per recreational harvester per day. The two-day total of twelve lobster per recreational harvester in Monroe County, adjacent Federal waters, and Biscayne National Park can only be possessed when transporting your catch by car on, or after, the second day.

Diving at night for lobster is NOT permitted in Monroe County and adjacent Federal waters. Bully-netting and hoop-netting is permitted at night. “Night” is 1 hour after official sunset to 1 hour before official sunrise.

Prohibited Areas:

- **Artificial Habitats in State Waters**
- **Biscayne Bay/Card Sound Spiny Lobster Sanctuary**
- **Layton**
No person shall remove by any means, whether by trap, diving, spearing or otherwise, any Florida spiny lobster from any waters within the city limits.
- **Dry Tortugas National Park**
- **Everglades National Park (Florida Bay)**
- **Florida Keys National Marine Sanctuary**
The following no-take areas are marked by 30” diameter round yellow boundary buoys:
 - **Sanctuary Preservation Areas (SPAs)**
 - Carysfort Reef
 - Elbow
 - Key Largo Dry Rocks
 - Grecian Rocks
 - French Reef
 - Molasses Reef
 - Conch Reef
 - Hen and Chickens
 - Davis Reef
 - Cheeca Rocks
 - Alligator Reef
 - Coffins Patch
 - Sombrero Key
 - Looe Key
 - Newfound Harbor
 - Eastern Dry Rocks
 - Rock Key
 - Sand Key
 - **Special-use Research Only Areas**
 - Conch Reef
 - Tennessee Reef
 - Looe Key Patch Reef
 - Eastern Sambo
 - **Ecological Reserves**
 - Western Sambo
 - Tortugas (not marked, refer to GPS coordinates)
 - **John Pennekamp Coral Reef State Park**
All of John Pennekamp Coral Reef State Park is closed during the two-day Sport Season to the harvest of spiny lobster.
- **Local Jurisdictions**
Local jurisdictions have specific restrictions on snorkeling and diving. Jurisdictions have extended the rule beyond the Lobster Sport Season.

In the local jurisdictions, there is no diving or snorkeling within:
 - 300 feet of improved residential or commercial shoreline, any manmade or private canal, any public or private marina.
 - Dive means to wholly or partially submerge one’s body while equipped with a mask or goggles, whether or not any type of underwater breathing apparatus is used.
- **Marathon** (Ch. 36 Art. VII)
Rule applies during Sport Season only.
- **Key Colony Beach** (Ch. 5 Art. I)
Rule applies during the 4 days preceding Sport Season and continues until 10 days have elapsed after the opening of Regular Season.
- **Islamorada** (Ch. 66 Art. I)
Rule applies during the 3 days preceding Sport Season, the entirety of Sport Season and the first 5 days of Regular Season.
- **Layton, Key West and Unincorporated Monroe County** (Monroe County Ch. 26 Art. IV)
Rule applies during the 3 days preceding Sport Season, the entirety of Sport Season and the first 5 days of Regular Season. Exception: diving and snorkeling is allowed in front of his or her property to the center line of the canal or 100 feet of open water.

Regular Season State and Federal Waters

August 6 through March 31.

Begins at 12:01 a.m. on August 6.
Ends at 12:00 midnight on March 31.

Bag Limit: Six (6) per recreational harvester per day.

Diving at night for lobster is permitted.

Prohibited Areas:

- **Artificial Habitats in State Waters**
- **Biscayne Bay/Card Sound Spiny Lobster Sanctuary**
- **Layton**
No person shall remove by any means, whether by trap, diving, spearing or otherwise, any Florida spiny lobster from any waters within the city limits.
- **Dry Tortugas National Park**
- **Everglades National Park (Florida Bay)**
- **Florida Keys National Marine Sanctuary**
The following no-take areas are marked by 30” diameter round yellow boundary buoys:
 - **Sanctuary Preservation Areas (SPAs)**
 - Carysfort Reef
 - Elbow
 - Key Largo Dry Rocks
 - Grecian Rocks
 - French Reef
 - Molasses Reef
 - Conch Reef
 - Hen and Chickens
 - Davis Reef
 - Cheeca Rocks
 - Alligator Reef
 - Coffins Patch
 - Sombrero Key
 - Looe Key
 - Newfound Harbor
 - Eastern Dry Rocks
 - Rock Key
 - Sand Key
 - **Special-use Research Only Areas**
 - Conch Reef
 - Tennessee Reef
 - Looe Key Patch Reef
 - Eastern Sambo
 - **Ecological Reserves**
 - Western Sambo
 - Tortugas (not marked, refer to GPS coordinates)
 - **John Pennekamp Coral Reef State Park**
During the Regular Season no person shall harvest any lobster species from or within any coral formation (patch reef) regardless of its proximity to, or exclusion from, a marked “Pennekamp Lobster Exclusion Zone.”
 - “Pennekamp Lobster Exclusion Zones” are closed during the Regular Season to the harvest of any lobster species and are marked with white and orange spar buoys:
- **Local Jurisdictions**
Local jurisdictions have specific restrictions on snorkeling and diving. Jurisdictions have extended the rule beyond the Lobster Sport Season.

In the local jurisdictions, there is no diving or snorkeling within:
 - 300 feet of improved residential or commercial shoreline, any manmade or private canal, any public or private marina.
 - Dive means to wholly or partially submerge one’s body while equipped with a mask or goggles, whether or not any type of underwater breathing apparatus is used.
- **Key Colony Beach** (Ch. 5 Art. I)
Rule applies during the 4 days preceding Sport Season and continues until 10 days have elapsed after the opening of Regular Season.
- **Islamorada** (Ch. 66 Art. I)
Rule applies during the 3 days preceding Sport Season, the entirety of Sport Season and the first 5 days of Regular Season.
- **Layton, Key West and Unincorporated Monroe County** (Monroe County Ch. 26 Art. IV)
Rule applies during the 3 days preceding Sport Season, the entirety of Sport Season and the first 5 days of Regular Season. Exception: diving and snorkeling is allowed in front of his or her property to the center line of the canal or 100 feet of open water.

“Pennekamp Lobster Exclusion Zones”

- Turtle Rocks
- Basin Hills North
- Basin Hills East
- Basin Hills South
- Higdon’s Reef
- Cannon Patch
- Mosquito Bank North
- Mosquito Bank South East
- Three Sisters North
- Three Sisters South